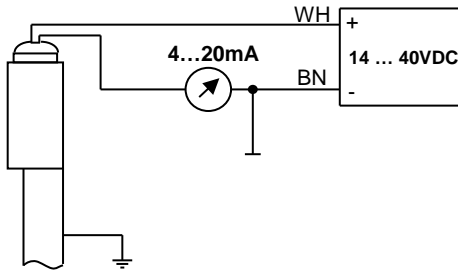


**External electrical connections**



**Description:**

**Transmitter, 4...20mA current output for use with WEKA Visual Level Indicators media temperature ≤ 250°C**

The transmitter is mounted outside of the float chamber opposite to the indication rail (see datasheet 20010501). The magnet inside the float activates the reed switches in the transmitter, depending on the level of liquid in the float chamber, thereby changing the effective value of a resistance network. The resulting voltage output is converted by an internal electronic circuit to a 4...20mA signal. If the liquid level rises above the measuring range of the transmitter (30 mm) the output signal jumps to 115% (ca. 22,5mA) and remains on that limit.

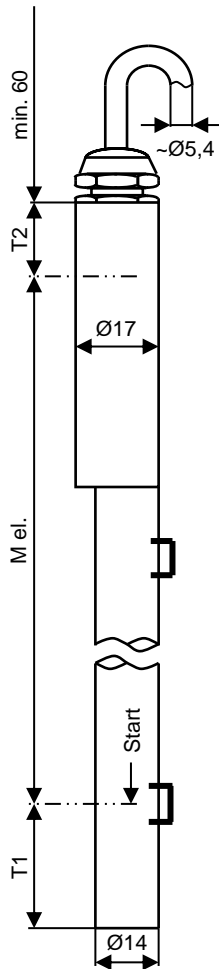
**Product code:**

**31967-W-010-10    10mm resolution**  
**31967-W-010-05    5mm resolution**  
**M el. = Measuring length in mm**

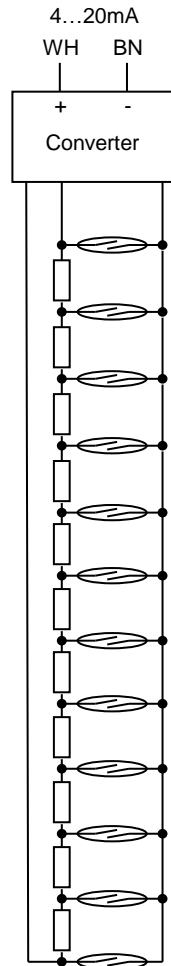
[For details see page 2](#)

**Dimensions**

**Internal circuit**



Type xxxxx-10 T1=65mm T2=30mm / Type xxxxx-05 T1=30mm T2=65mm



**Resolution**

**31967-W-010-10    10mm**  
**31967-W-010-05    5mm**

**Transmitter housing tube dia.**

**Ø 14 / 10                      Ø 17 / 14**

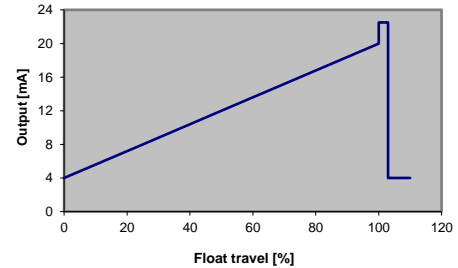
**Measuring length "M el."**

200mm (min.) to 4000mm (max.)

Longer M el. available with types 34067, 34167, and 34267 (more piece design)

**Signal output**

4...20mA current loop



**Loop supply voltage**

14 ... 40VDC

**Operating temperature**

Media temperature                      -50°C ... +250°C  
 Ambient temperature (Ta)           -20°C ... +50°C

**Enclosure**

IP68 - 10bar (EN60529)

**Materials**

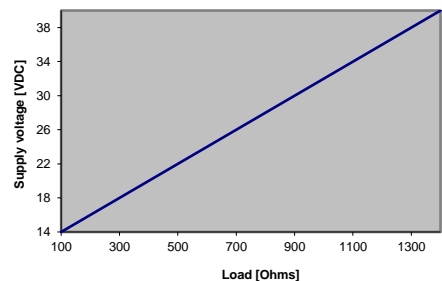
Housing tube  
 Cable gland  
 - Seal  
 Cable (Standard 5m)

Stainless steel 316 / 316L  
 Brass: nickel plated  
 FKM / Fluoroelastomere  
 Silicone: red; 2 x 0.5mm<sup>2</sup>, Ø ~ 5.4mm, halogen-free,  
 largely resistant to oils/petroleum products  
 Polyester: silver, black printing

**Type label**

**Output load**

max. 100Ω at 14VDC  
 max. 1.4KΩ at 40VDC



**Fixation**

When ordering level indicators with transmitters, hose clamps are included.  
 When ordering transmitters as spare parts, hose clamps are never included and must be ordered separately.  
 In case of ordering hose clamps pipe size must be indicated:

For pipe diameter                      30...40mm                      Part no.                      80648  
 For pipe diameter                      40...57mm and 57...80mm    Part no.                      84043

**Note**

Please read the instructions in our datasheet 20010501 before performing installation.