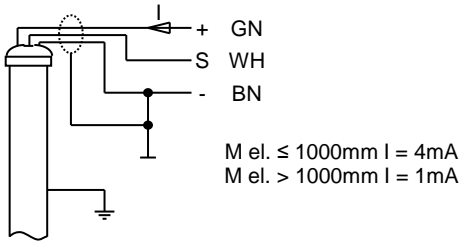


**External electrical connections**



**Description:**

**Transmitter for use with WEKA Visual Level Indicators media temperature ≤ 150°C**

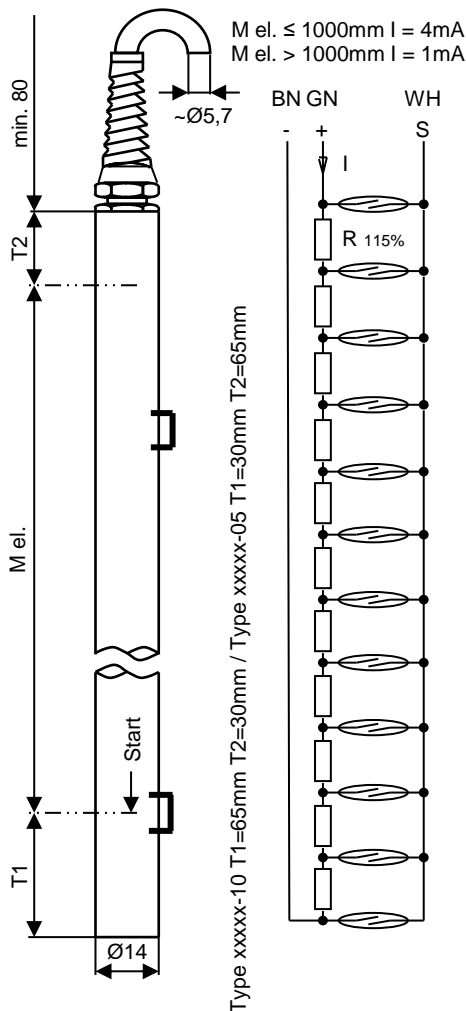
The transmitter is mounted outside of the float chamber opposite to the indication rail (see datasheet 20010501). The magnet inside the float activates the reed switches in the transmitter, depending on the level of liquid in the float chamber, thereby changing the effective value of a resistance network. This converts a current input into a variable voltage output signal that can be fed directly to a remote display or recording instrument. If the liquid level rises above the measuring range of the transmitter (30mm) the output signal jumps to 115% and remains on that limit.

**Product code:**  
[For details see page 2](#)

**29710-010-10**      **10mm resolution**  
**29710-010-05**      **5mm resolution**  
**M el. = Measuring length in mm**

**Dimensions**

**Internal circuit**



**Resolution**

**29710-010-10**      **29710-010-05**  
10mm                      5mm

**Transmitter housing tube dia.**

Ø 14 / 10                      Ø 17 / 14

**Measuring length "M el."**

200mm (min.) to 4000mm (max.)

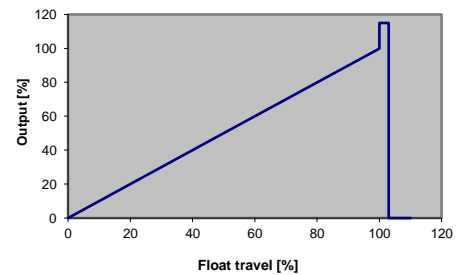
Longer M el. available with types 34067, 34167, and 34267 (more piece design)

**Supply current**

M el. ≤ 1000mm    I = 4mA  
M el. > 1000mm    I = 1mA

**Signal output**

- With R = 10Ω and I = 1mA  
10mV per step (1cm)
- With R = 10Ω and I = 4mA  
40mV per step (1cm)



**Operating temperature**

Media temperature                      -50°C ... +150°C  
Ambient temperature (Ta)              -20°C ... +50°C

**Enclosure**

IP68 - 10bar (EN60529)

**Materials**

Housing tube                              Stainless steel 316 / 316L  
Cable gland                                PA: with bend protection, grey  
- Seal                                        Perbunan (NBR)  
Cable (Standard 5m)                      PVC: grey, 3 x 0.34mm<sup>2</sup>, Ø ~ 5.7mm, shielded, largely resistant to oils/petroleum products  
Type label                                 Polyester: silver, black printing

**Fixation**

When ordering level indicators with transmitters, hose clamps are included.  
When ordering transmitters as spare parts, hose clamps are never included and must be ordered separately.  
In case of ordering hose clamps pipe size must be indicated:

For pipe diameter	30...40mm	Part no.	80648
For pipe diameter	40...57mm and 57...80mm	Part no.	84043

**Note**

Please read the instructions in our datasheet 20010501 before performing installation.  
The cable shielding is not connected with the transmitter housing. This connection should be effected by the user.  
The transmitter can be used as a resistor network only when leads WH and BN or WH and GN are connected.