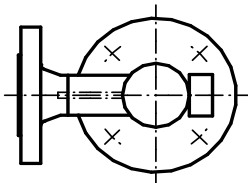
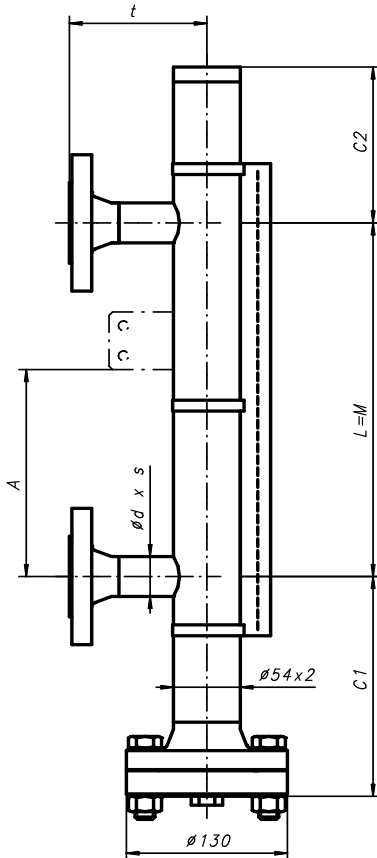


## Standard Series 50

Type: 32755-K

Design meets the requirements of PED 2014/68/EU and harmonized standards



### Float extension lower / upper:

	C1:	C2:
Standard	190	135

C1 & C2 shorter or longer, if out of standard range or with damping springs

### Standard flange connections:

	EN	ANSI/ISO
Connection pieces, d*s:		
DN15:	21.3*2.0	21.3*2.0
DN20:	26.9*2.0	26.9*2.0
DN25:	33.7*2.0	33.7*2.0
≥ DN32 *2):	33.7*2.0	33.7*2.0
Dimension t:		
DN15:	110	124
DN20:	110	127
DN25:	110	132
≥ DN32 *2):	tba on request 3):	

### Purchase Order Data:

Company:  
Purchase order no.:  
Quantity:

Project:	
Tag no.:	

### Operating Conditions

Fluid:  
Density: ≥ 0.55g/cm<sup>3</sup> g/cm<sup>3</sup>:  
Viscosity: ≤ 600cSt cSt:  
Operating pressure: max. 50bar(g) @ 20°C \*1) bar(g):  
Design pressure: " bar(g):  
Operating temperature: -80°C ... +400°C \*1) °C:  
Design temperature: " °C:  
Connecting Distance "L": max. 5600mm (one-piece design) mm:

### Design and Materials:

Float chamber: 316/316L Screws and nuts: A2-70, ISO 3506  
Float: Ti alloy (Standard) type no.: 37943-2 / -3 / -4  
type no.:

other materials and densities see float selection diagram or on request

Damping spring top and bottom, 1.4401 No.: 27399  
Gaskets: Fibre compound Aramid/NBR (<150°C) Standard  
PTFE, non reinforced, racked (<250°C)  
Graphite incl. reinforcing net in SS 316 (<400°C)

### Process connections:

#### EN-Connecting Flanges acc. EN1092-1 (Standard):

- EN1092-1/11 B1/DNxx/PN40/316L DN15:  
- wn-flange, RF, Rz=12,5 ... 50µm, turning DN20:  
DN25:

#### ANSI/class300 (= ISO/PN50) - connecting flanges:

- ANSI/ASME B16.5 / ISO-DIS7005-1.2, type 11/B1 ANSI 1/2" resp. ISO DN15 :  
- wn-flanges, RF SF, Rz=12,5 ... 50µm, turning ANSI 3/4" resp. ISO DN20 :  
ANSI 1" resp. ISO DN25 :

### Other Connections

#### Drain connection thread (Standard) (for vent see price list):

G3/8" (ISO7-1/ISO228-1) with plug R3/8" (ISO7-1) and PTFE tape (<=250°C)  
G3/8" (ISO7-1/ISO228-1) with plug G3/8" (ISO228-1) and Ni gasket (>250°C)

### Indication Rail:

PC, IP65 (<150°C) Flaps: red-silver No.: 34837 Standard  
PC, IP68, inert gas (<150°C) Flaps: red-silver No.: 41008  
Al/PC, IP54 (<250°C) Flaps: red-silver No.: 34560  
Al/glass, IP54 (<400°C) Flaps: black-silver No.: 37100  
Special Flaps: No.:

### Accessories (installation instructions see spec. no. 20010501)

Fixation bracket no. 26936: dimension "A" [mm]:  
Magnetic switch: quantity: type:  
Transmitter: resolution [mm]: 5 / 10 type:  
measuring length M<sub>el</sub> [mm]:  
Converter: type:  
Further accessories:

### Test reports and certificates:

EN10204:2004-3.1 certificate for used materials of the float chamber:

### Special executions and notes:

### Notes:

\*1) Refer to pressure-temperature rating! Lowest pressure-temperature rating of any connecting flange or fitting will set the limitation!  
Test pressure will be specified according to WEKA specification AW 2.1.2.

\*2) With special reduction flanges.

\*3) Depending on size of connecting flanges.

All indicated dimensions in mm. All dimensions are only valid on VLI in standard execution.